



SIGAL GROUP OF COMPANIES



Head Office

Mezzanine Floor, Redco Plaza 78-E
Jinnah Avenue, Blue Area, Islamabad



Lahore Office

2nd Floor, Office 6, Hill View Arcade,
5 Davis Road, Lahore



info@sigalmarketing.com



www.sigalmarketing.com



UAN 111 111 114

www.sigalmarketing.com



SIGAL VILLAS AND ROW HOUSES

YOUR GATEWAY TO
A RICHER LIFESTYLE



CHAIRMAN'S MESSAGE

As one of the emerging real estate companies in Pakistan, SIGAL Group is committed to developing premium infrastructures and setting a new trend in commercial and residential properties with a diversified portfolio that meets international standards.

We pride ourselves in creating unique lifestyle options, exceptional commercial spaces and opportunities for investors. SIGAL Group constantly endeavours to create and deliver innovative propositions that give our customers the best value for money. What has always set us high is our commitment to innovation, an innate ability to tap into the needs and aspirations of our clients and delivering our projects on time.

A constantly evolving brand, SIGAL Group continues to thrive by answering the call of a new generation of property buyers and investors while helping to shape the region's urban transformation.

And last, but not the least, our core value is Sharia-compliant business. I welcome you to be a part of our network in the pursuit of halal ventures.



Chairman, SIGAL Group

Shahid Mehmood Anwar

DESIRED BY MANY.
OWNED BY FEW.



PROJECT DIRECTOR'S MESSAGE

Mountainous terrains, with their lush green colors, and peaks kissing the heavens have inspired me since my childhood. I always wondered how humanity has been conquering the highlands to create its dwellings with the passage of time.

It was a dream come true, when our team decided to engage architects and designers of international repute to develop its flagship project SIGAL Villas & Row Houses in Murree with its serene location and panoramic views.

The project offers amenities for a modern lifestyle based on innovative design, paving terraces by elegantly chiseling the hilltops to create the dream homes for nature-lovers to settle or enjoy mesmerizing views of the queen of hills as tourists.

SIGAL offerings are not only apt for the local community but also for the overseas Pakistanis seeking investment opportunities in their homeland.



Project Director

A handwritten signature in green ink, appearing to read 'Gull Muhammad Khan' with a stylized flourish at the end.

Gull Muhammad Khan

EXCEEDING YOUR EXPECTATIONS





SIGAL GROUP

SIGAL Group of Companies, a strategic alliance of MEEZAB, BINHAM, HADAYAH, and UDAAN, is bringing 45+ years of diverse experience in travel & tourism, international property leasing, turnkey construction projects, as well as marketing of numerous real estate ventures.

Staffed by experts with immense international exposure, our sister organization, SIGAL Marketing (Pvt.) Ltd. has successfully promoted numerous residential schemes, commercial buildings and farmhouses across Pakistan over the last two decades.

Since its inception, SIGAL Developments (Pvt) Ltd. has already launched four projects in Murree, Lahore and Islamabad, setting new industry trends.

Our Group has a customer-centric approach. We are investing in understanding the true needs and wants of our potential clients, utilizing cutting-edge technologies and innovative approaches in market research and tailoring solutions that are aiming not just to satisfy but to excite our customers.



IT'S ALL ABOUT THE
LIFESTYLE



SIGAL
VILLAS

BREATHTAKING PANORAMIC VIEWS



MURREE - PAKISTAN'S MOST POPULAR HILL-STATION

Pakistan has natural beauty, world class monuments and heritage sites depicting the love of nature, history and glory of the past. Popularly known as the Queen of Mountains because of its high altitude, Murree is one of the most popular tourist destinations in the country. It is considered to be a gateway to the beautiful Northern region of the South Asian country and is a part of the famous Margalla Hills which are spread over an area of more than 300,000 acres. Surrounded by lush green trees, Murree is a tourist destination throughout the year because of its scenic, relaxing atmosphere, and proximity to Islamabad.

Adjacent to Murree is the Galiyat region of North West Frontier Province which includes Nathia Gali, Ayubia, Khanspur, Dunga Gali, Khaira Gali and Changla Gali. One can picturize in the hills, listening to the morning birds, feeling the crisp pine breeze and soaking the gentle sunshine.



SIGAL VILLAS AND ROW HOUSES

Set amidst the lush green forests of Murree, SIGAL Villas and Row Houses offer a rare opportunity to own a piece of this dynamic area. Inspired by nature, these stunning homes set the perfect stage for immersing yourself in the heavenly landscape.

With exceptional attention to detail, outstanding specifications and stunning views of the picturesque hill station, our exclusive collection of luxury homes offers true living without compromise.

You can choose from three expertly-designed styles of homes including villas, row houses and studios, to own a stunning contemporary home at arguably the best spot in the city.



VILLAS

Private wooden cottages to suit your mood, from relaxing in your bedroom to hosting friends and family in your living room.



ROW HOUSES

Generous floor plans designed to emphasize efficiency, space and comfort while providing you with breathtaking views.



STUDIOS

Beautifully designed open floor plans with a contemporary twist, where every detail is crafted to perfection to maximize your relaxation.





FEATURES

- Composite and wooden facade
- Scandinavian style interior
- Laminate flooring
- UPVC windows
- Stainless steel and chrome fixtures
- Fully fitted kitchen
- Marble countertops
- Wooden doors
- Landscaped gardens
- Imported bathroom tiles


- Modern cabinetry
- Built in wooden closets
- SMD lighting
- Landline connections
- Fire resistant wiring
- Silicone based paint
- BBQ hookup line
- Power backup
- Cat 5 cable infrastructure
- Smart home system





DESIGNED WITH A SENSE OF
LUXURY THROUGHOUT




PROJECT HALLMARKS

 Panoramic Views

 Rawal Lake View


 Premium Location


 Inclined Elevators


 Parking Plaza

 Mosque

 Restaurant

 Supermarket

 Dedicated Parking

 Maintenance Services

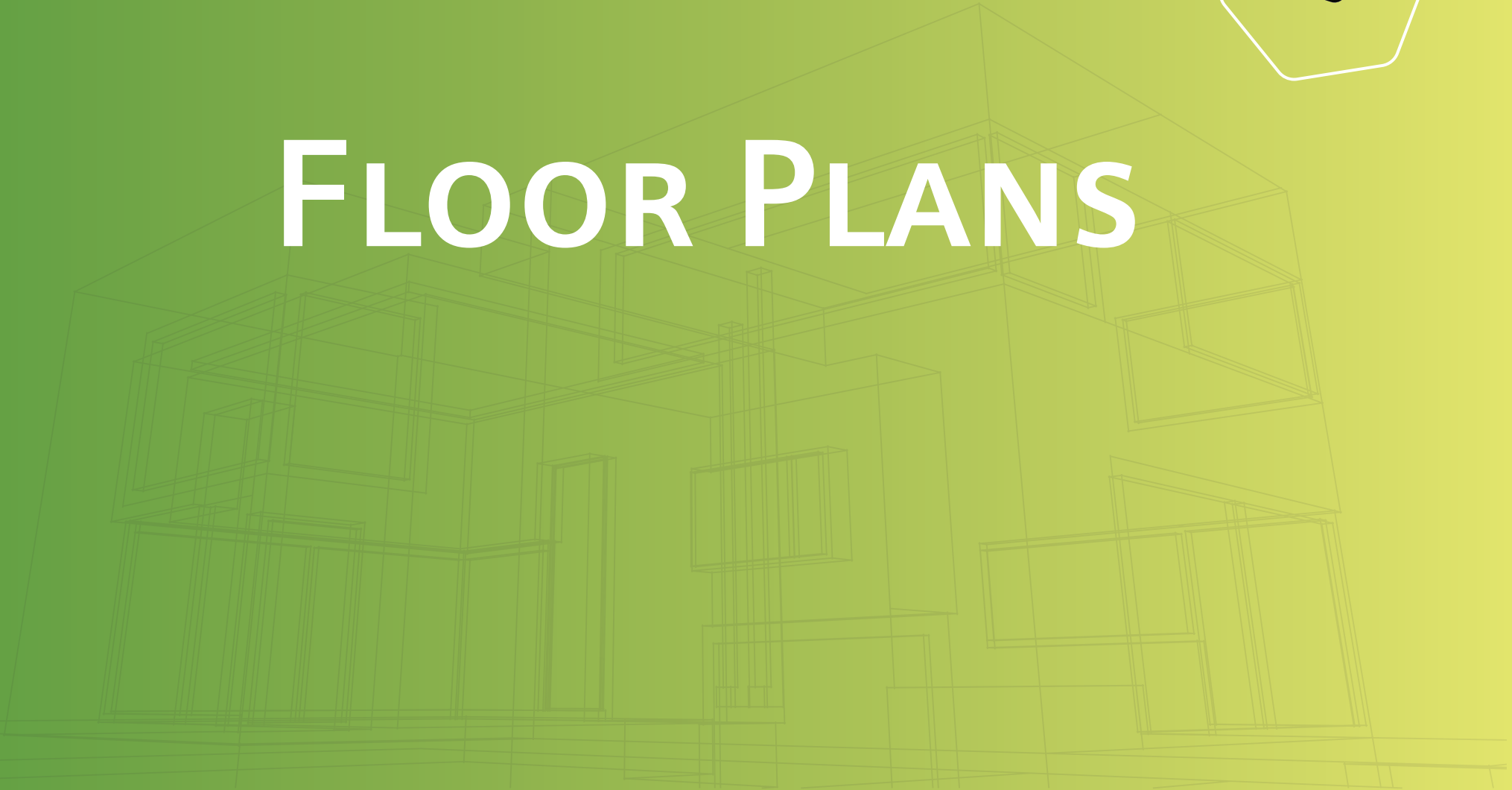


ABOVE AND
Beyond THE
ORDINARY





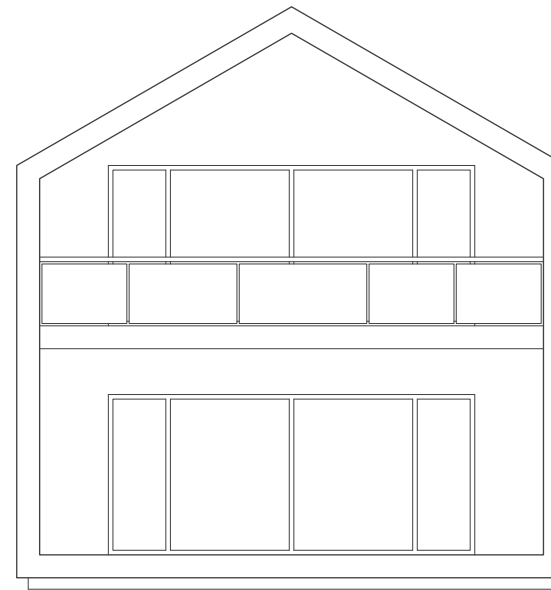
FLOOR PLANS



VILLA TYPE A

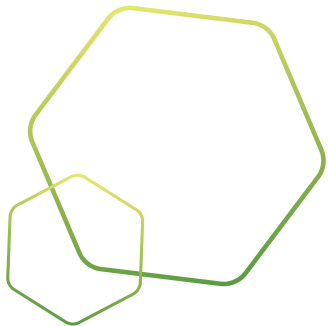
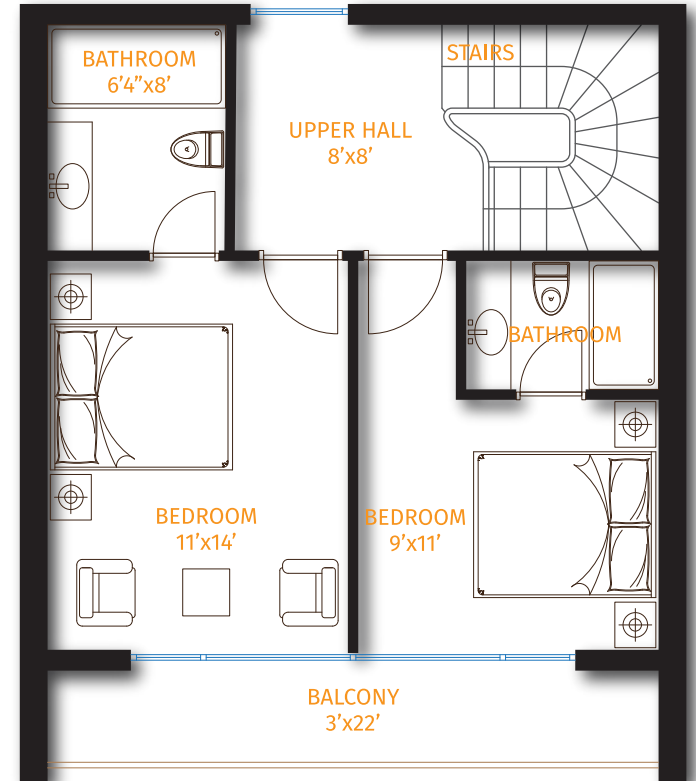
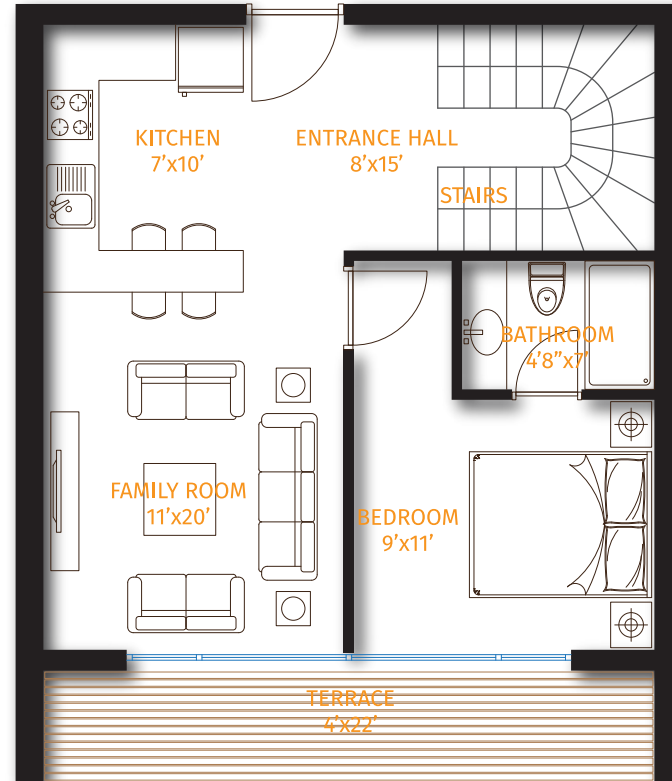
1,344 Sq.Ft.

- > Duplex
- > 3 Bedrooms
- > 3 Bathrooms
- > Living Room
- > Terrace
- > Balcony



24 feet

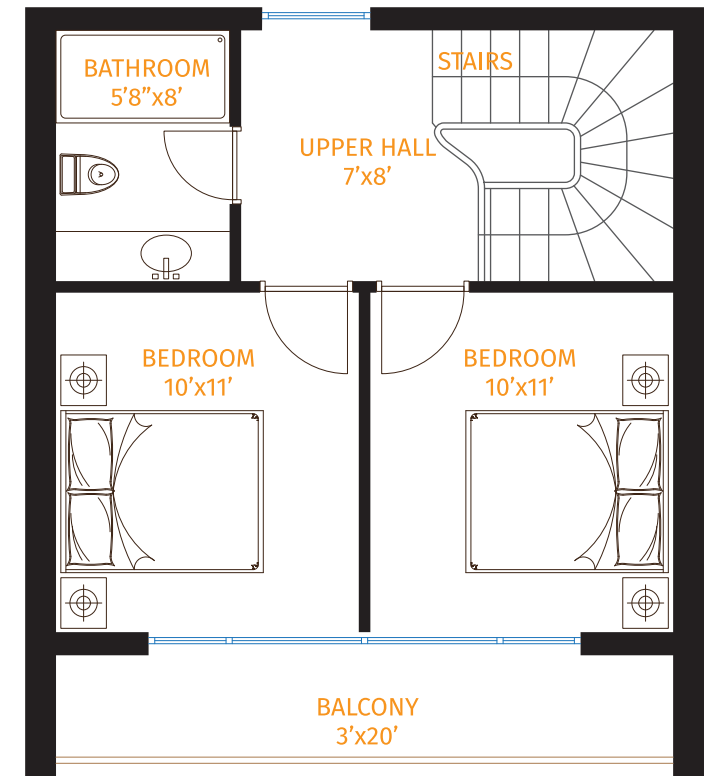
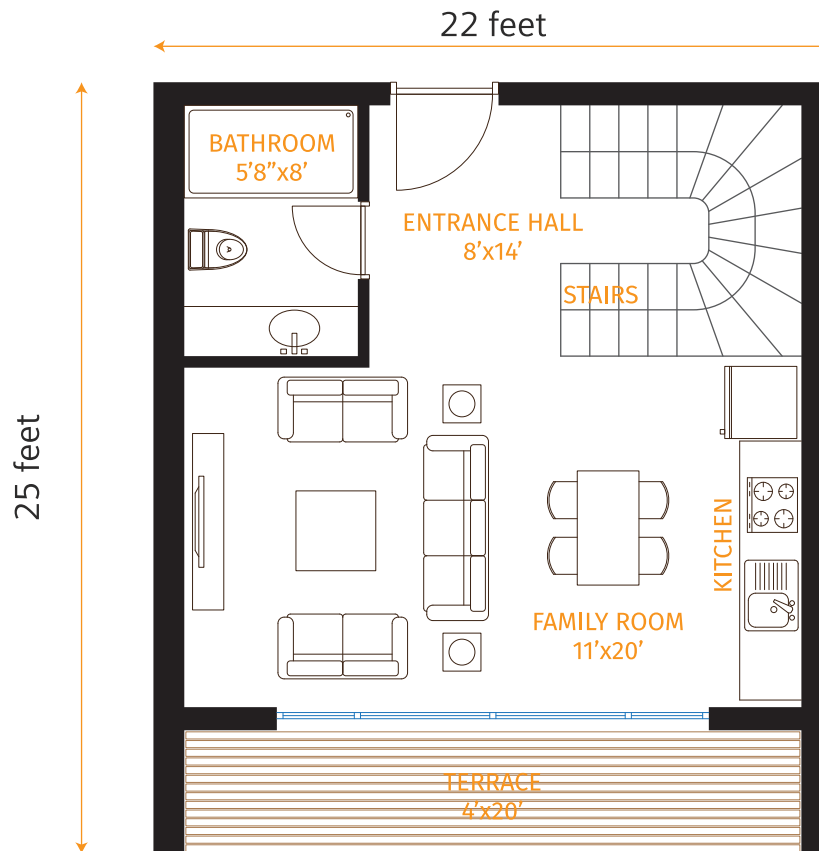
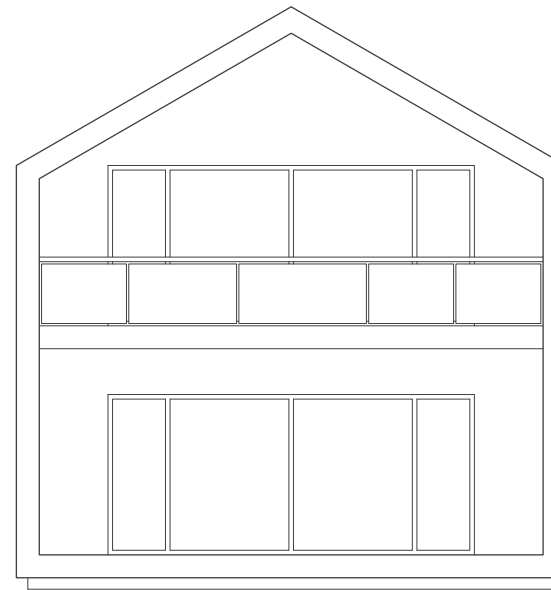
28 feet



VILLA TYPE B

1,100 Sq.Ft.

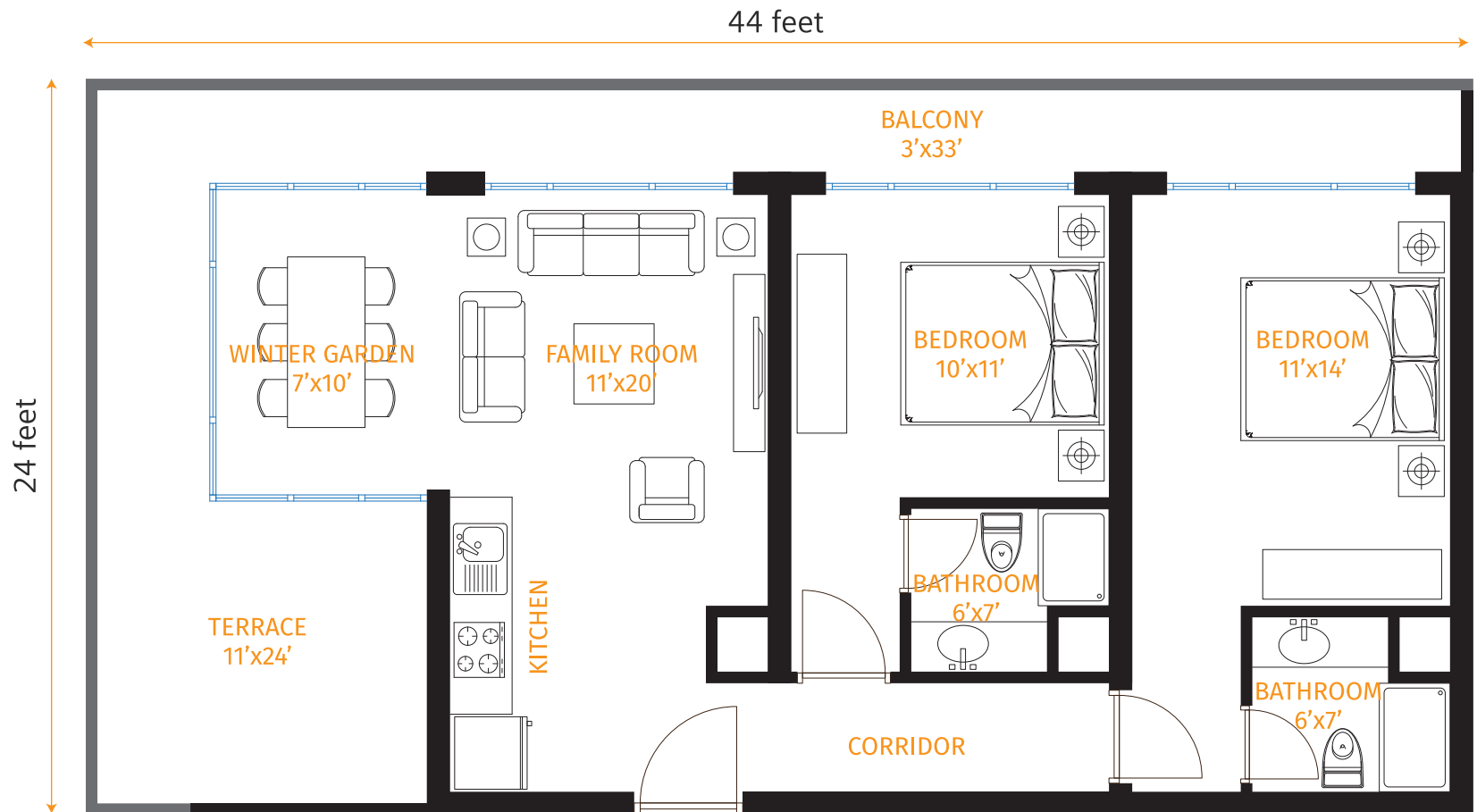
- > Duplex
- > 2 Bedrooms
- > 2 Bathrooms
- > Living Room
- > Terrace
- > Balcony



ROW HOUSE TYPE A

1,228 Sq.Ft.

- > 2 Bedrooms
- > 2 Bathrooms
- > Living Room
- > Winter Garden
- > Terrace
- > Balcony

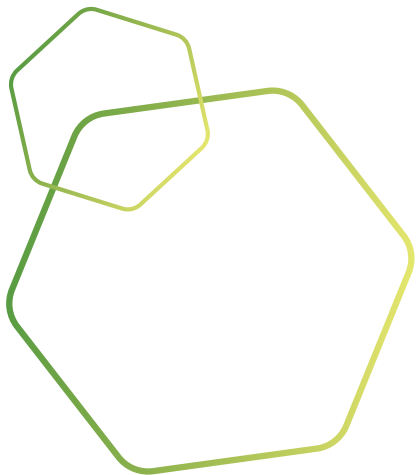
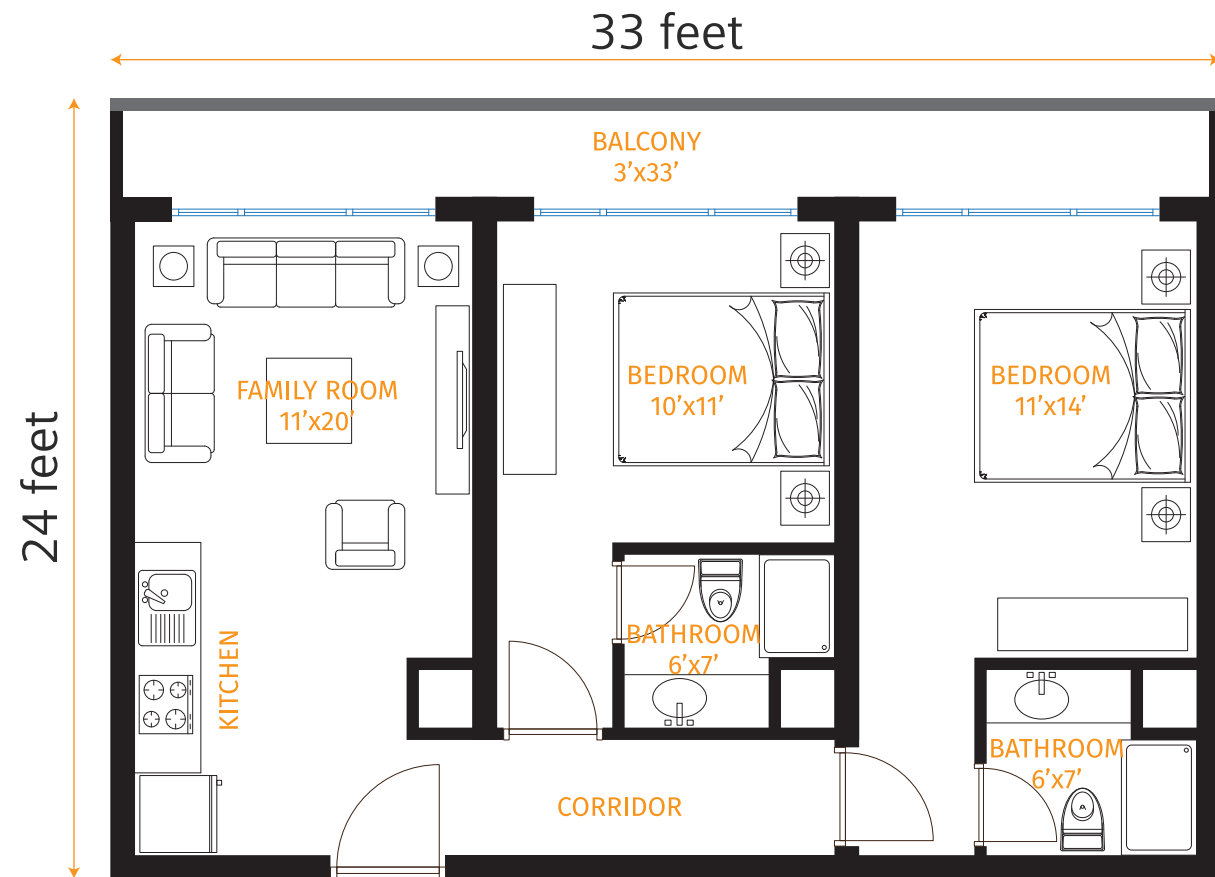


FLOOR PLAN

ROW HOUSE TYPE B

921 Sq.Ft.

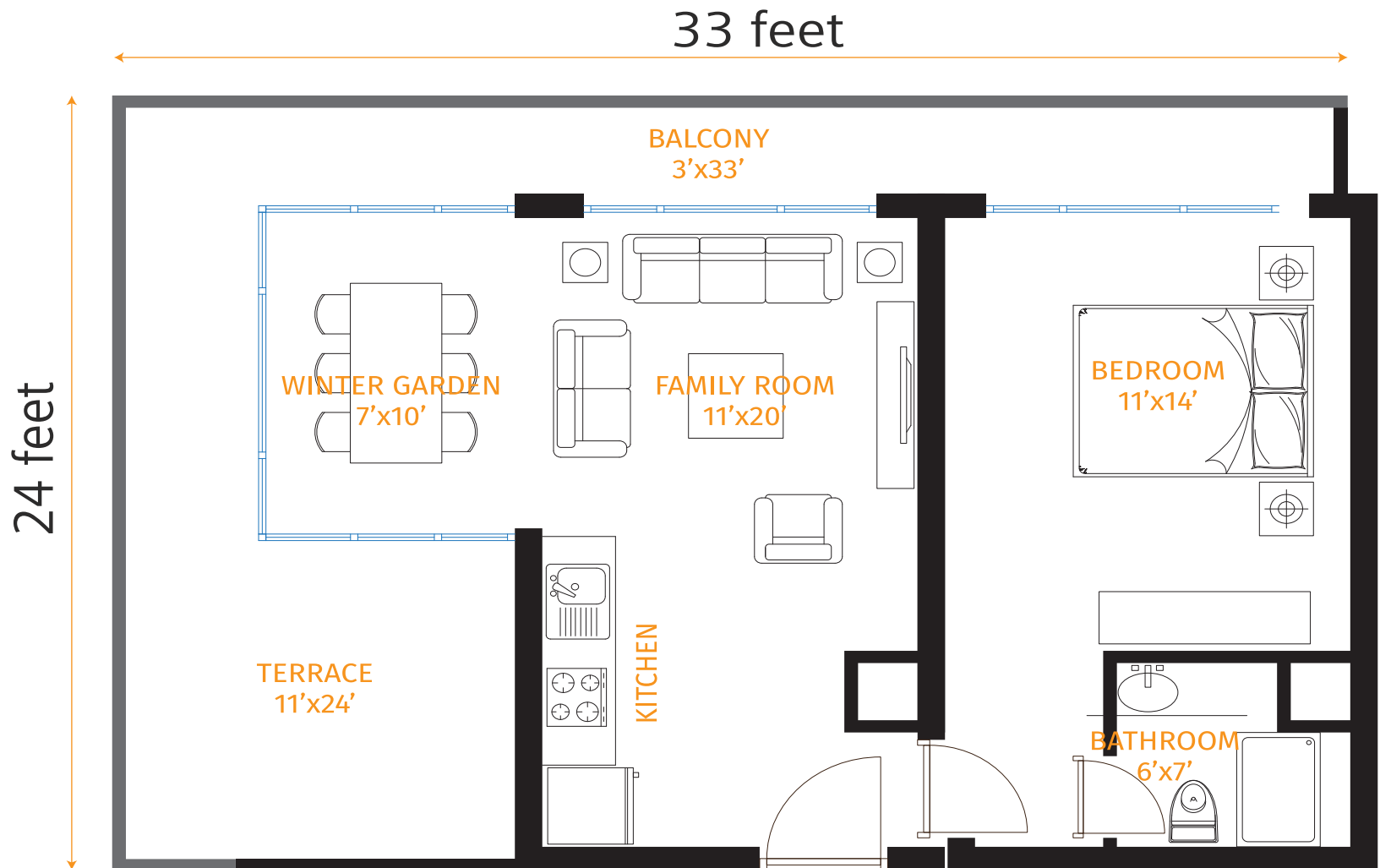
- > 2 Bedrooms
- > 2 Bathrooms
- > Living Room
- > Balcony



ROW HOUSE TYPE C

921 Sq.Ft.

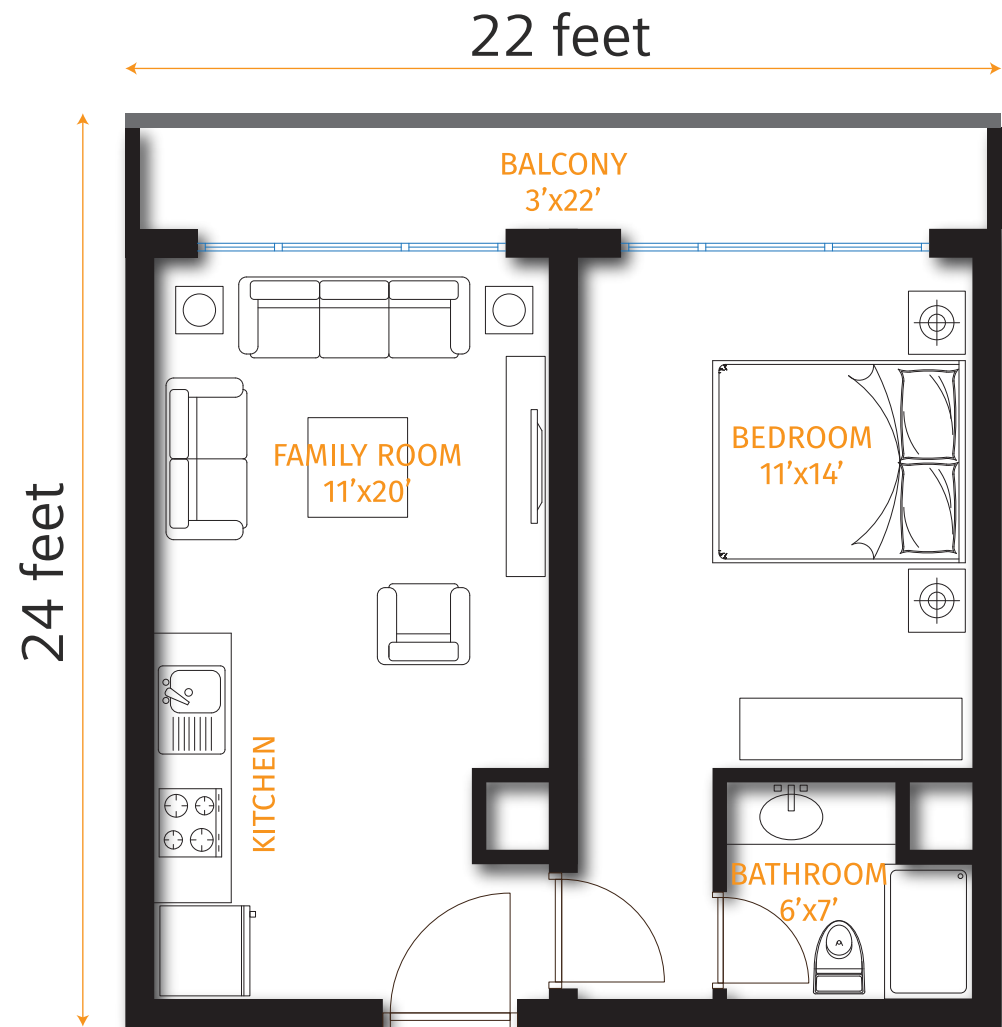
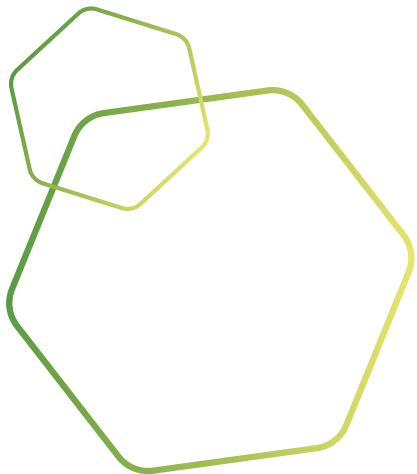
- > 1 Bedroom
- > 1 Bathroom
- > Living Room
- > Winter Garden
- > Terrace
- > Balcony



ROW HOUSE TYPE D

614 Sq.Ft.

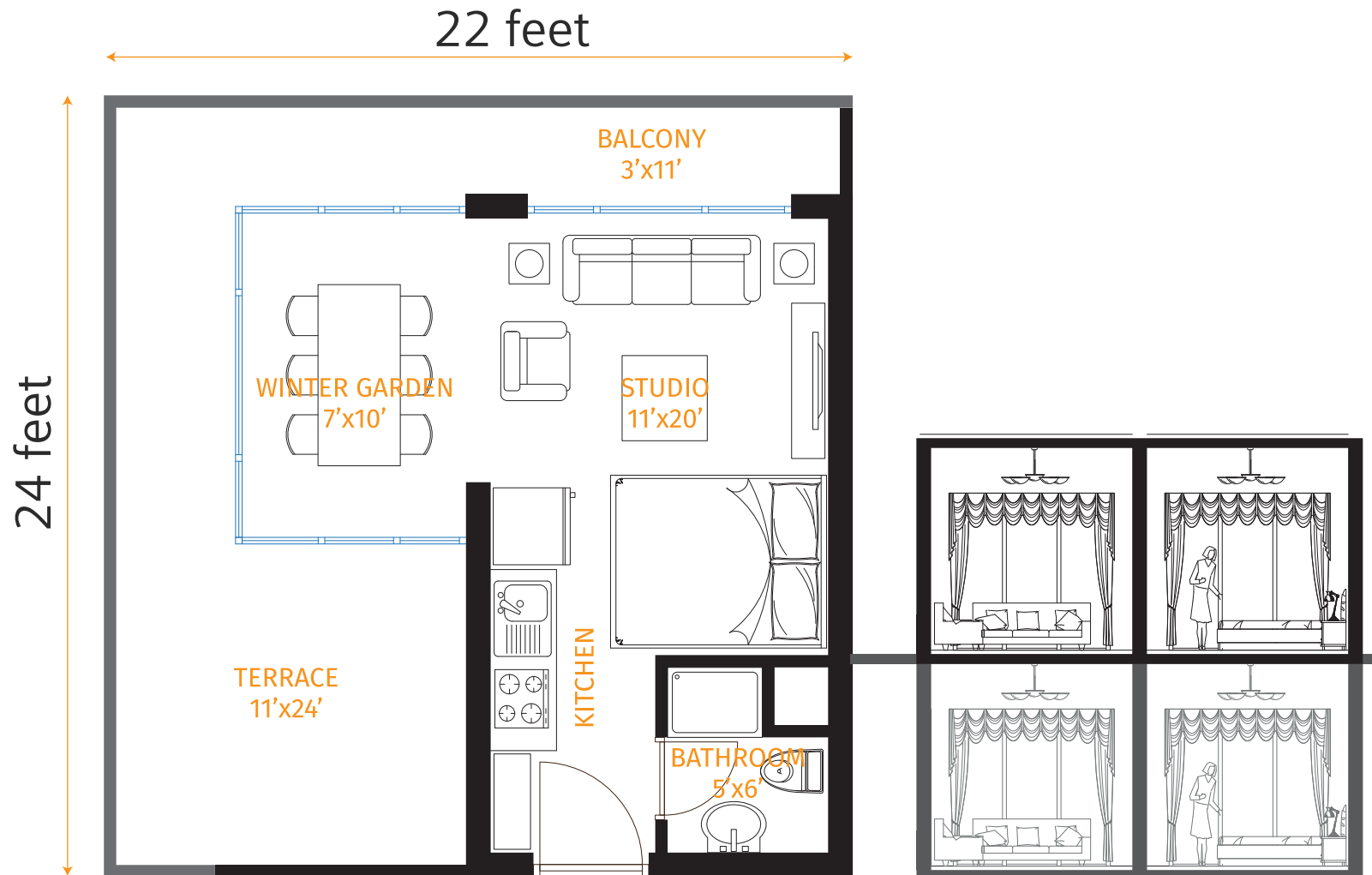
- > 1 Bedroom
- > 1 Bathroom
- > Living Room
- > Balcony



STUDIO TYPE A

614 Sq.Ft.

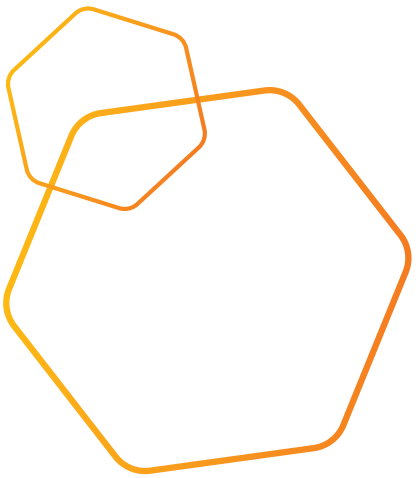
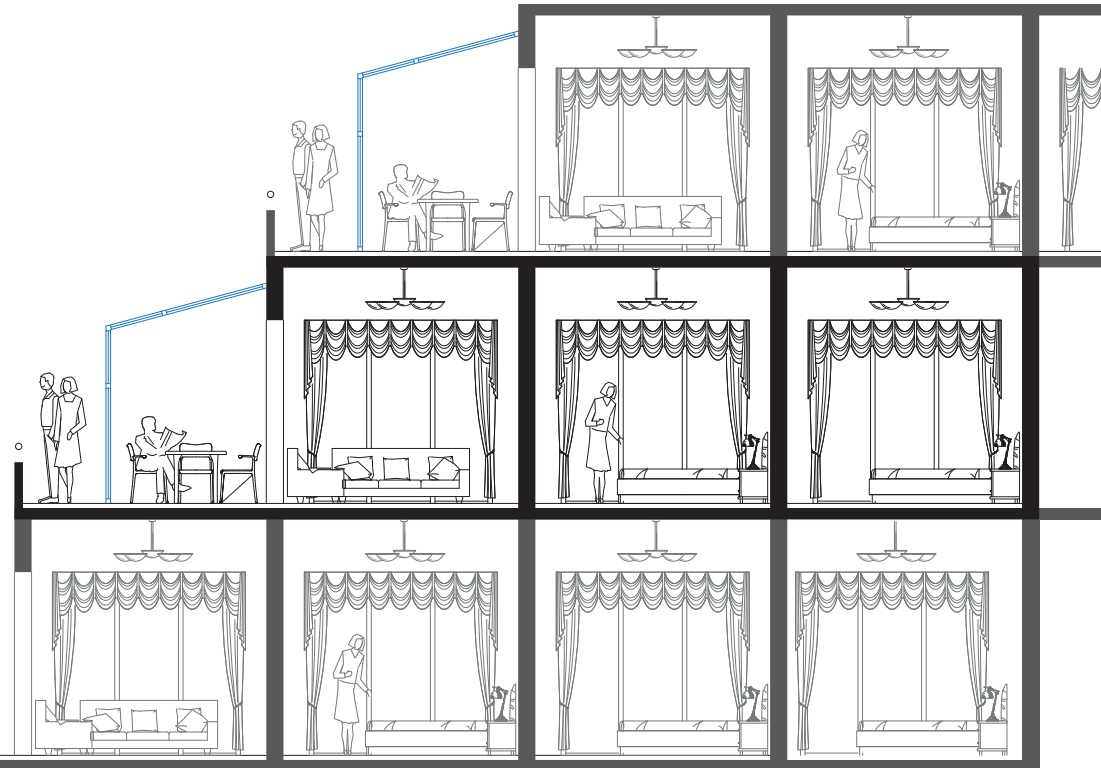
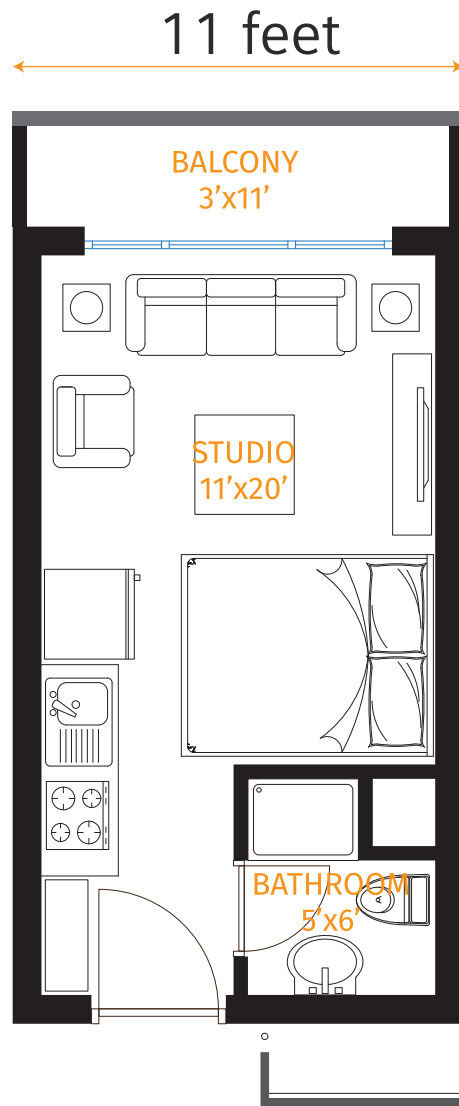
- > Studio
- > 1 Bathroom
- > Winter Garden
- > Terrace
- > Balcony



STUDIO TYPE B

307 Sq.Ft.

- > Studio
- > 1 Bathroom
- > Winter Garden
- > Balcony





THREE YEARS' EASY PAYMENT PLAN

BOOKING

CONFIRMATION

5 HALF YEARLY
INSTALLMENTS

30 MONTHLY
INSTALLMENTS

POSSESSION

10%

10%

25%

Each installment 5%

45%

Each installment 1.5%

10%

BEAUTIFULLY CRAFTED INTERIORS



OTHER PROJECTS



MS TOWER

Located in the heart of Lahore, MS Tower is a multipurpose complex that will facilitate commercial activities ranging from retail outlets, office spaces and coffee shops to a picturesque rooftop restaurant.




MURREE OAKS-II
SERVICED APARTMENTS

MURREE OAKS

Beautifully situated below Pindi Point at 6,200 feet height, serviced apartments of Murree Oaks offer a luxurious lifestyle with mesmerizing views and an abundance of amenities.

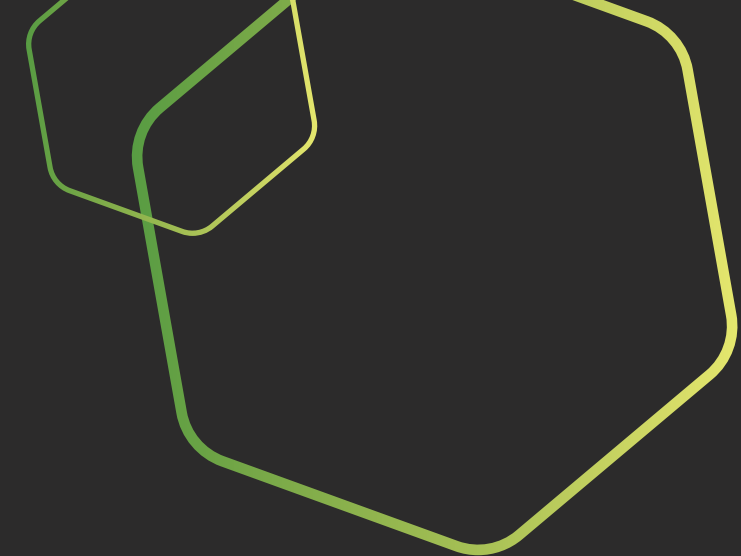



1947
HOUSING
Islamabad

1947 HOUSING

For the first time in Pakistan presenting you the ultimate housing project that will reinvigorate our true culture and revive values of our great ancestors. The nature-friendly choice makes 1947 Housing one of its kinds.





GET AN EARLY BIRD DISCOUNT



Head Office

Mezzanine Floor, Redco Plaza 78-E
Jinnah Avenue, Blue Area, Islamabad

Lahore Office

2nd Floor, Office 6, Hill View Arcade,
5 Davis Road, Lahore



info@sigalmarketing.com



www.sigalmarketing.com



UAN 111 111 114